



AUTOKLUB
ČESKÉ REPUBLIKY

www.platformavize0.cz
www.autoklub.cz
www.policie.cz



v@zenula

BASIC RULES OF ROAD TRAFFIC IN THE CZECH REPUBLIC

Speed limits

The speed limit for motor vehicles with a maximum weight of up to 3.5 tonnes and buses outside the city is 90 kmph. Vehicles weighing over 3.5 tonnes can drive at a maximum of 80 kmph. On motorways, motor vehicles weighing up to 3.5 tonnes and buses can drive at maximum speed of 130 kmph, on expressways at maximum speed of 110 kmph, other at 80 kmph. The maximum speed limit in cities and towns is 50 kmph; motorways in cities allow a speed of up to 80 kmph.



When to call the police to a traffic accident?

Calling the police is necessary if the visible damage to any of the participant's car, including the transported items, exceeds 100,000 CZK (approx. 4,000 EUR) and whenever a person gets injured or killed, or when a third party property or the road gets damaged.



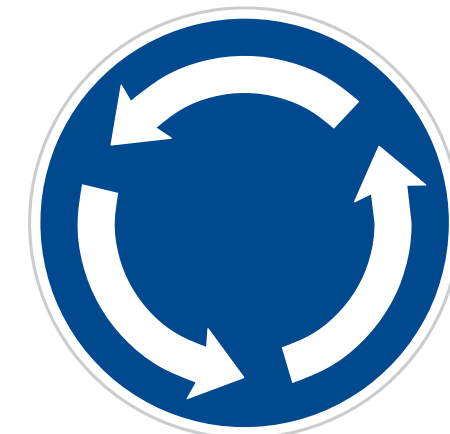
Authorization of police officers in the event of a traffic offense

The police can impose and collect fines on the spot for traffic offenses. A police officer may, in serious cases, withhold a driving license. If the offense cannot be dealt with on the spot and is reported to the administrative authority, a police officer may require the offender to pay a security deposit as a guarantee that he or she will appear in the administrative proceedings. If the offender fails to pay the security deposit, the police offender is entitled to withhold his or her car.



Roundabouts

A driver entering and driving in a roundabout gives no indication of the change of direction. Conversely, when driving out of a roundabout, the driver is obliged to give a signal about the change of direction.



Driving in lanes in communities

In towns with two or more lanes marked on the road in one direction, the driver may use any lane for driving.

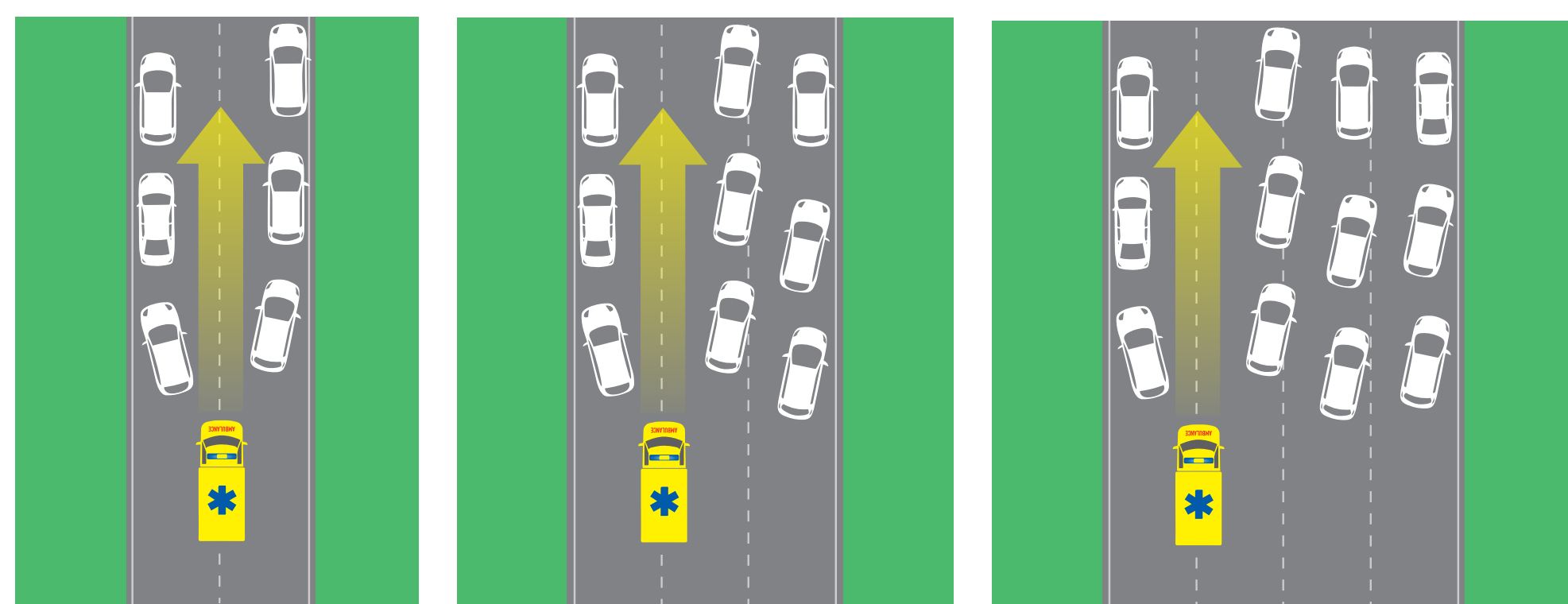


Driving in lanes out of communities

In principle, the right lane is used. The driver may use other lanes only when it is necessary for overtaking, passing or turning.



Rescue lane



Residential or pedestrian zones

Within the residential and pedestrian zone the driver can drive at a maximum of 20 kmph. In doing so the driver shall pay attention to pedestrians and children on the road who may not be endangered. When leaving a residential or pedestrian zone, the driver must give priority



Trams when turning

A tram that crosses the direction of travel of a vehicle on its right or left side when turning or changing direction and gives a turn signal has the right of way.



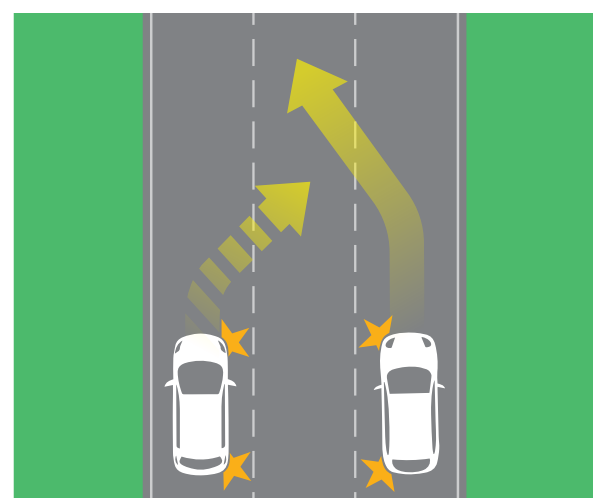
Pedestrian crossings

Pedestrians have priority at crossings and the driver must stop even if the pedestrian is just about to cross the road. However, beware that trams have priority over pedestrians even at crossings.



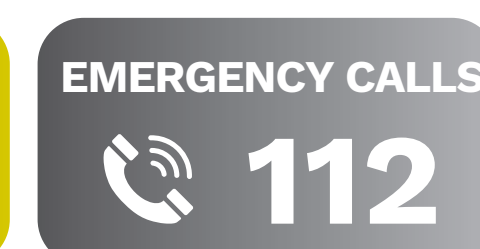
Three lanes

On roads with three lanes marked on the road in one direction, the driver may pass from the left lane to the middle lane provided the driver passing into the middle lane is not endangered.



Using a mobile phone

The driver commits an offense if he or she is holding a telephone or other voice or recording equipment in hand while driving. However, using hands-free kits is allowed.





AUTOKLUB
ČESKÉ REPUBLIKY

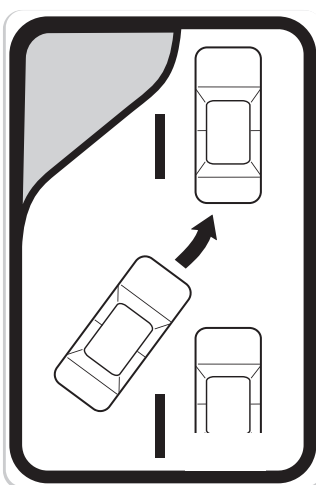
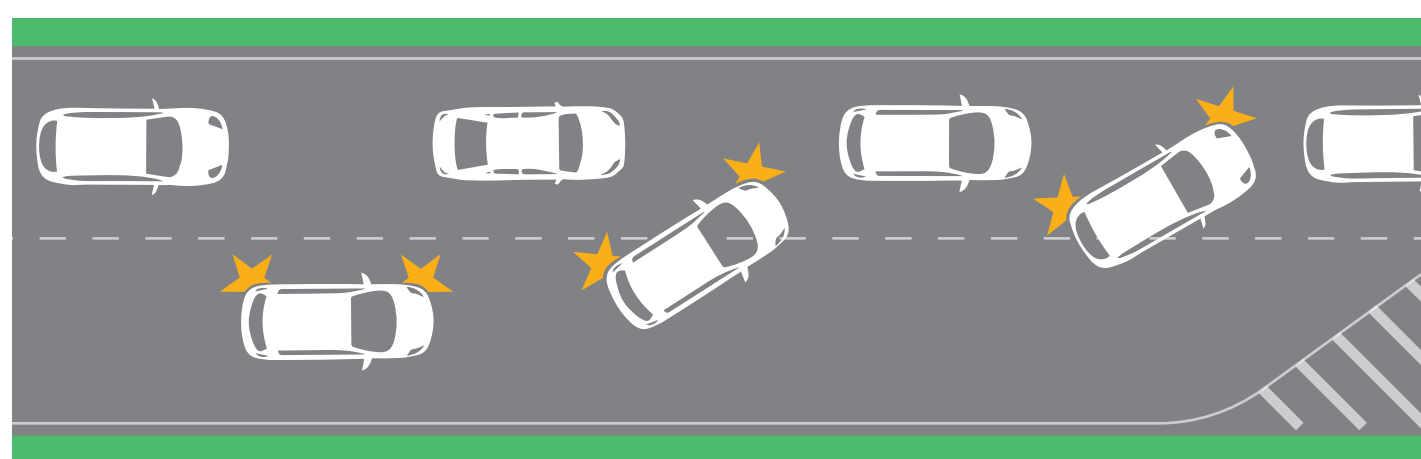
www.platformavize0.cz
www.autoklub.cz
www.policie.cz



vizenula

BASIC RULES OF ROAD TRAFFIC IN THE CZECH REPUBLIC

Zip-merging



Alcohol in blood

In the Czech Republic, there is zero tolerance for driving under the influence of alcohol. This also applies to cyclists. In the event of inspection, drivers are required to carry out a breath test; in the case of a positive test result, they are required to undergo a blood test to measure the amount of alcohol in their blood.



Daytime running lights of vehicles

When in motion, a vehicle has to always have sidelights and low-beam lights or daytime running lights, if equipped, on.



Reflective safety vests

If a motor vehicle driver leaves his or her vehicle in an emergency outside the town, he or she must wear a reflective safety vest. This does not apply to motorcyclists.



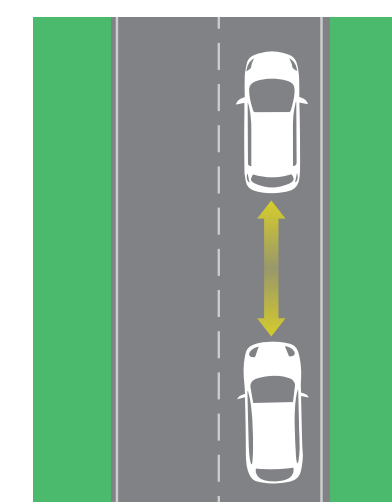
Seat belts and child car seats

Vehicle passengers are obliged to use safety belts on all seats. A suitable child seat must be used for each child up to 150 cm or 36 kg.



Distance between vehicles

A driver of a vehicle following another vehicle must leave sufficient safety clearance behind the two cars to avoid a collision in the event of a sudden reduction in speed or a sudden stopping of the vehicle ahead. It is recommended to maintain a distance corresponding to at least 2 seconds of travel from the vehicle in front.



Winter tires

Between 1 November and 31 March, motor vehicles other than motorcycles must be equipped with winter tires if there is a continuous layer of snow, ice or icing on the road or such a situation can be expected.



Bicycle helmets

Cyclists under 18 years old are required to have and wear a bicycle helmet properly attached.



Useful phrases

Turn right/left	Zahněte doprava/doleva
Help!	Pomoc!
Call the police!	Zavolejte policii!
I don't understand.	Nerozumím
No parking!	Zákaz parkování
Outside delivery zone!	Mimo zásobování
Delivery zone!	Zásobování
Outside transport service!	Jen mimo dopravní obsluhu
Valid from...to	Platnost od... do...
Caution, change of priority!	Pozor, změna přednosti v jízdě
Give way to trams	Dej přednost tramvaji
Slippery road!	Za mokra
Detour!	Objížďka
Road works!	Práce na silnici
Entrance!	Vjezd
Exit!	Výjezd
Soft verge!	Nezpevněná krajnice
One way road!	Jednosměrná ulice
Accident!	Nehoda
No through road!	Průjezd zakázán
Police!	Policie
Firefighters!	Hasiči
Ambulance!	Záchranná služba

Parking in Prague

There is a system of parking zones for residents in Prague. **Detailed information can be found at:**

<http://www.parkujvklidu.cz>



Motorway fees

Cars weighing up to 3.5 tonnes must have a motorway coupon affixed when driving on the highway. The coupon consists of two parts, one part being affixed to the windscreen screen, and the other part must be kept for possible inspection. Both parts must have the registration number of the vehicle filled.

Prices of motorway coupons:

Annual - **1 500 CZK***
Monthly - **440 CZK***
Ten days - **310 CZK***

Electronic tolls are applied to vehicles over 3.5 tonnes in total weight.

***prices valid for 2020**

